

# MILL AVE COLLECTION

**NWC & SEC 5<sup>th</sup> St & Mill Ave**  
Tempe, AZ

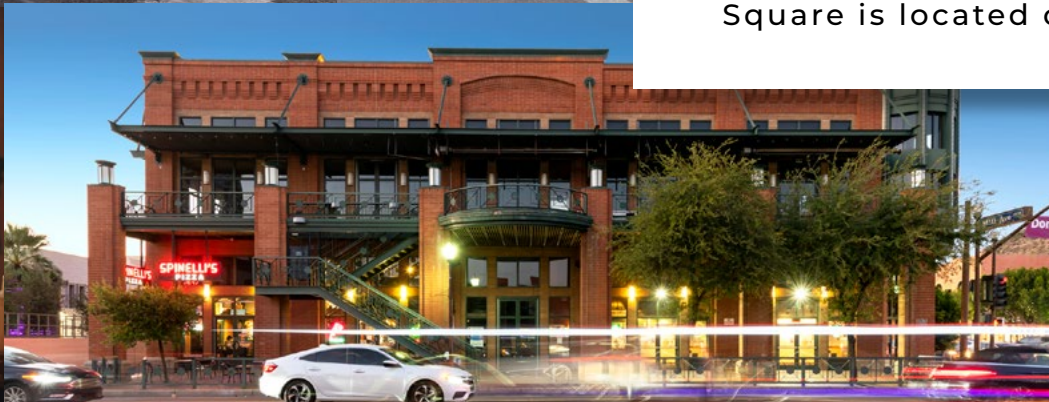






# HIGHLIGHTS

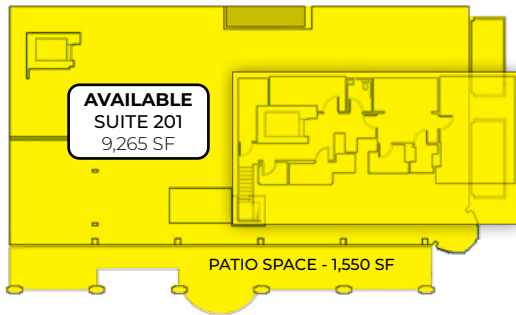
- ±1,106 - 9,265 SF Available
- Future Availabilities
- Patios
- Located along the western border of Arizona State University's campus. Tempe Square benefits from the 86,500+ students enrolled at one of the nation's largest public universities.
- Built in 1893, 501 South Mill is a historic landmark known as the Laird & Dines building.
- Tempe Square presents a unique architectural design that pays homage to the building's rich history, complemented by sophisticated modern finishes.
- Centrally located in Phoenix's booming Tempe market, Tempe Square is located on Mill Avenue.



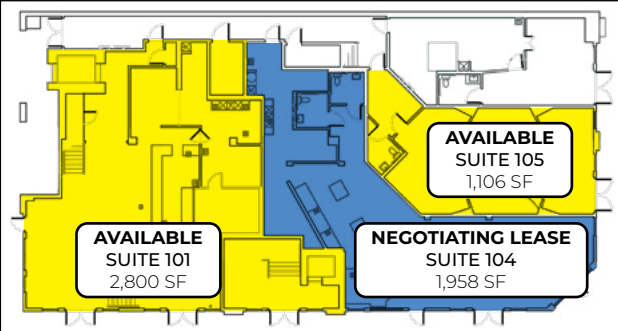


# AVAILABLE SPACE

## SECOND FLOOR TENANT



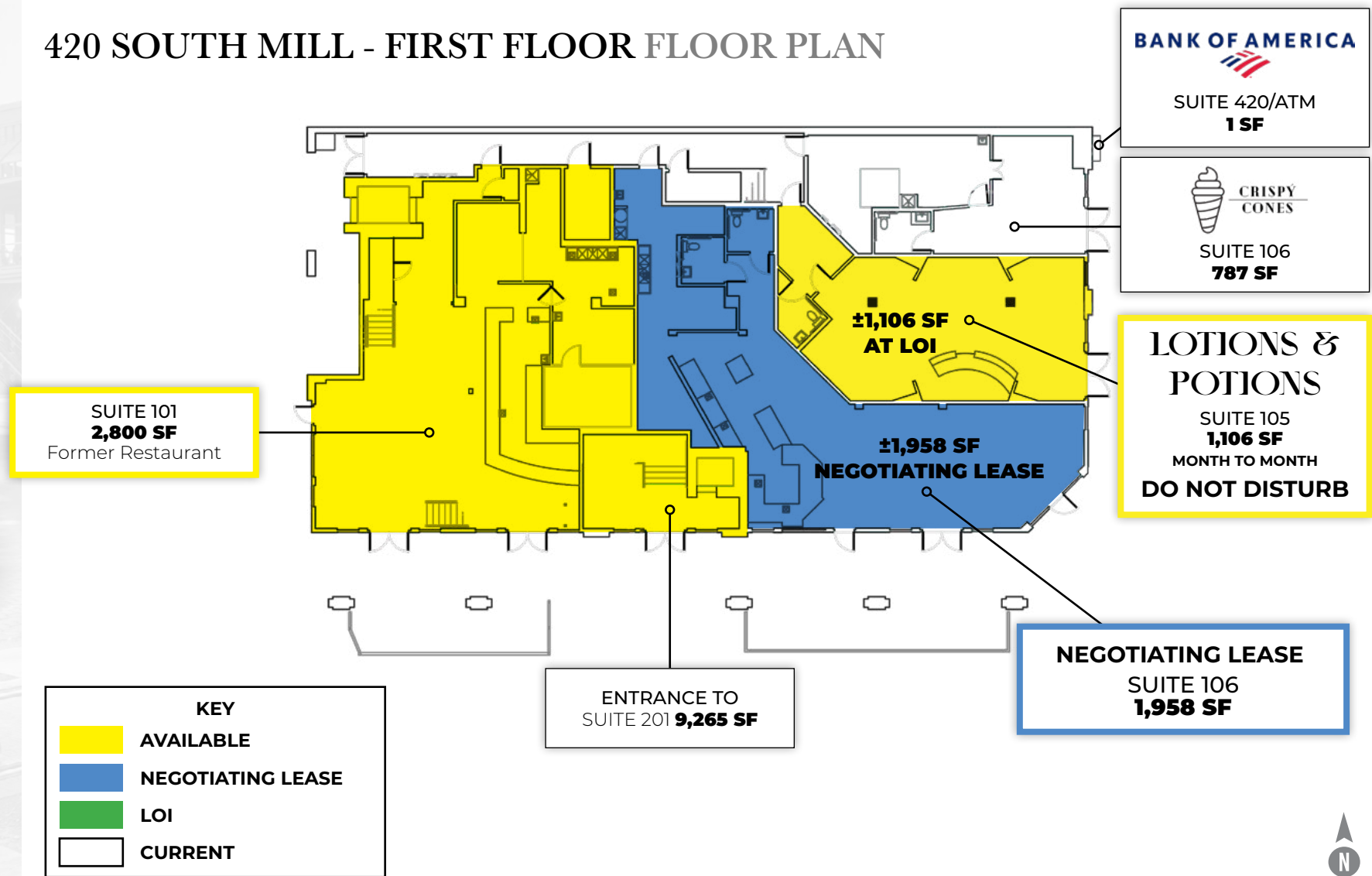
## FIRST FLOOR TENANT





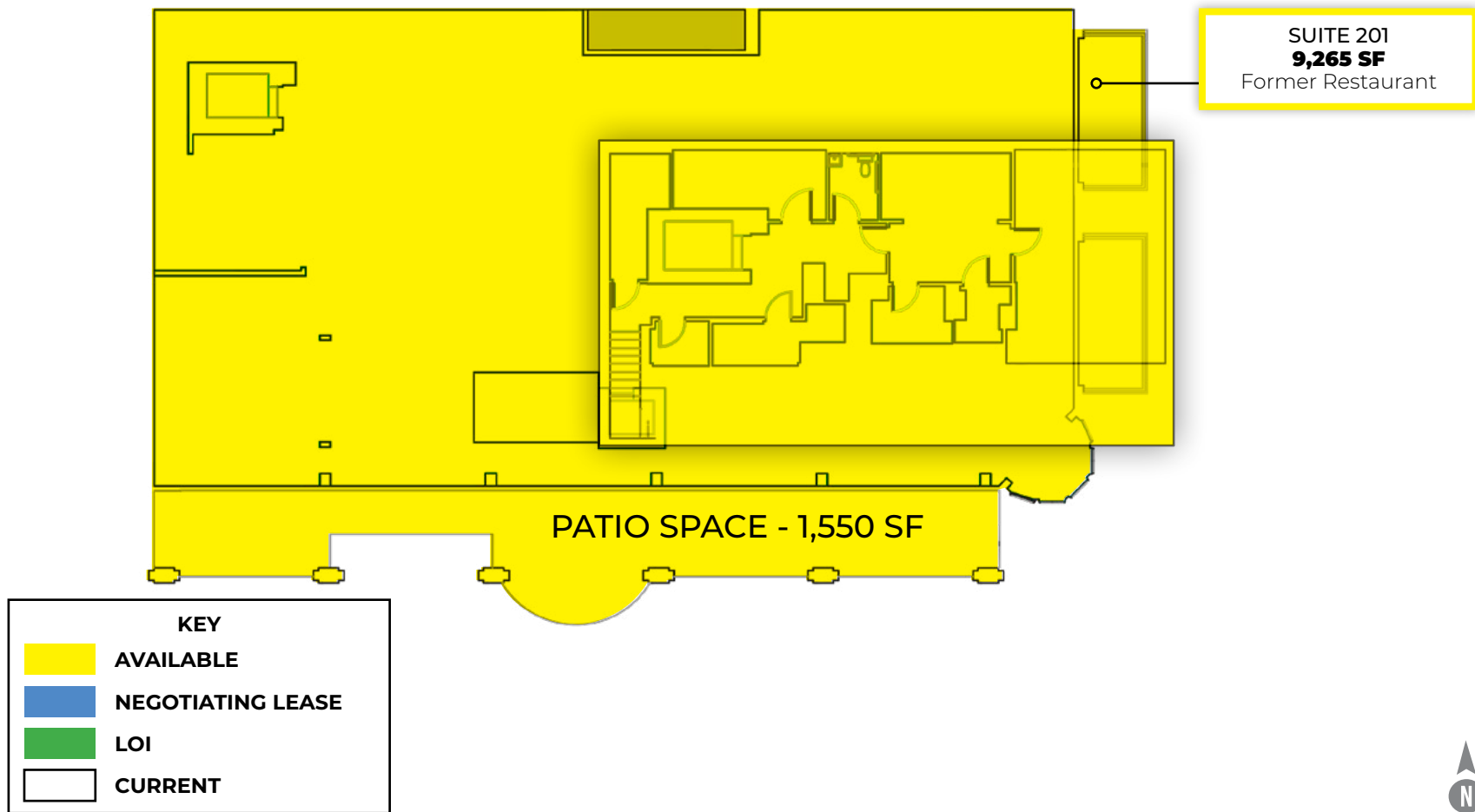
# AVAILABLE SPACE

## 420 SOUTH MILL - FIRST FLOOR FLOOR PLAN



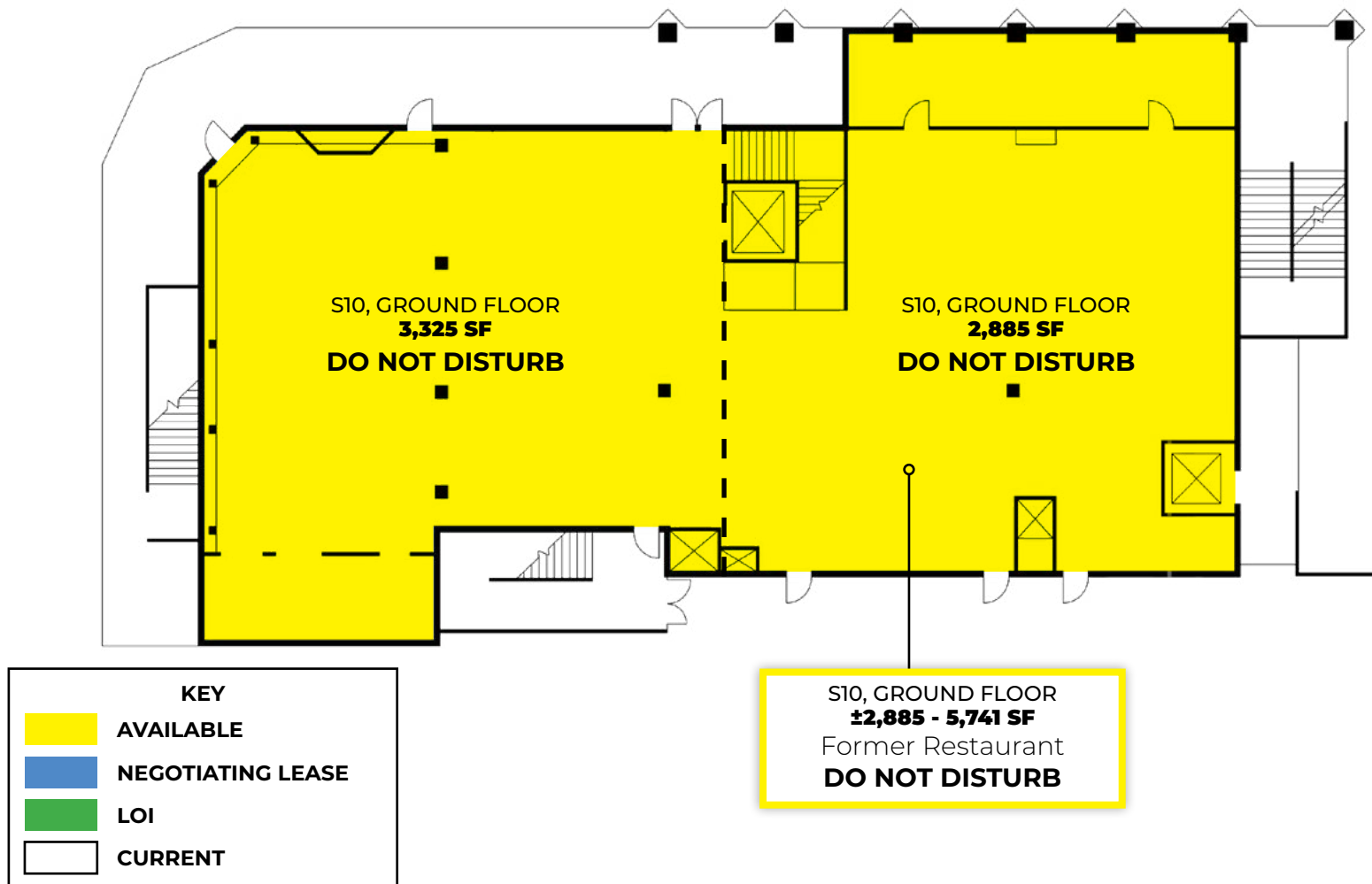
# AVAILABLE SPACE

## 420 SOUTH MILL - SECOND FLOOR FLOOR PLAN



# AVAILABLE SPACE

## 501 SOUTH MILL - FIRST FLOOR FLOOR PLAN





# NEARBY ATTRACTIONS

## 1 TEMPE TOWN LAKE

- More than 2.4M people visit Tempe Town Lake each year. 40+ special events held annually & state's largest 4th of July Celebration
- Open year-round with ±2.7M visitors annually

## IRONMAN | TEMPE, AZ

- Upwards of in attendance
- Impact is estimated at \$4M annually for restaurants, shops & hotel

## 2 TEMPE BEACH PARK

- Tempe Beach Park co-hosts about 40 events of all shapes and sizes each year, including the Ford Ironman Arizona, Rock 'n' Roll Marathon, Fourth of July celebration, Way Out West Oktoberfest, plus more

## 3 ROCK 'N' ROLL MARATHON

- Annual half and full marathon (January)
- Avg. runners & walkers in addition to volunteers & spectators annually

## 4 DESERT FINANCIAL ARENA

- Sun Devil men's and women's basketball, volleyball, gymnastics, and wrestling
- Average attendance 49,166
- Annual attendance 344,161

## 5 PAT'S RUN | TILLMAN FOUNDATION

- Annual 4.2 mile race (April)
- 35,000 Runners, walkers, volunteers & spectators

## 6 MONA PLUMMER AQUATIC COMPLEX

- Center seats 2,000 spectators
- Swimming, diving, water polo, triathlon events

## 7 MULLETT ARENA

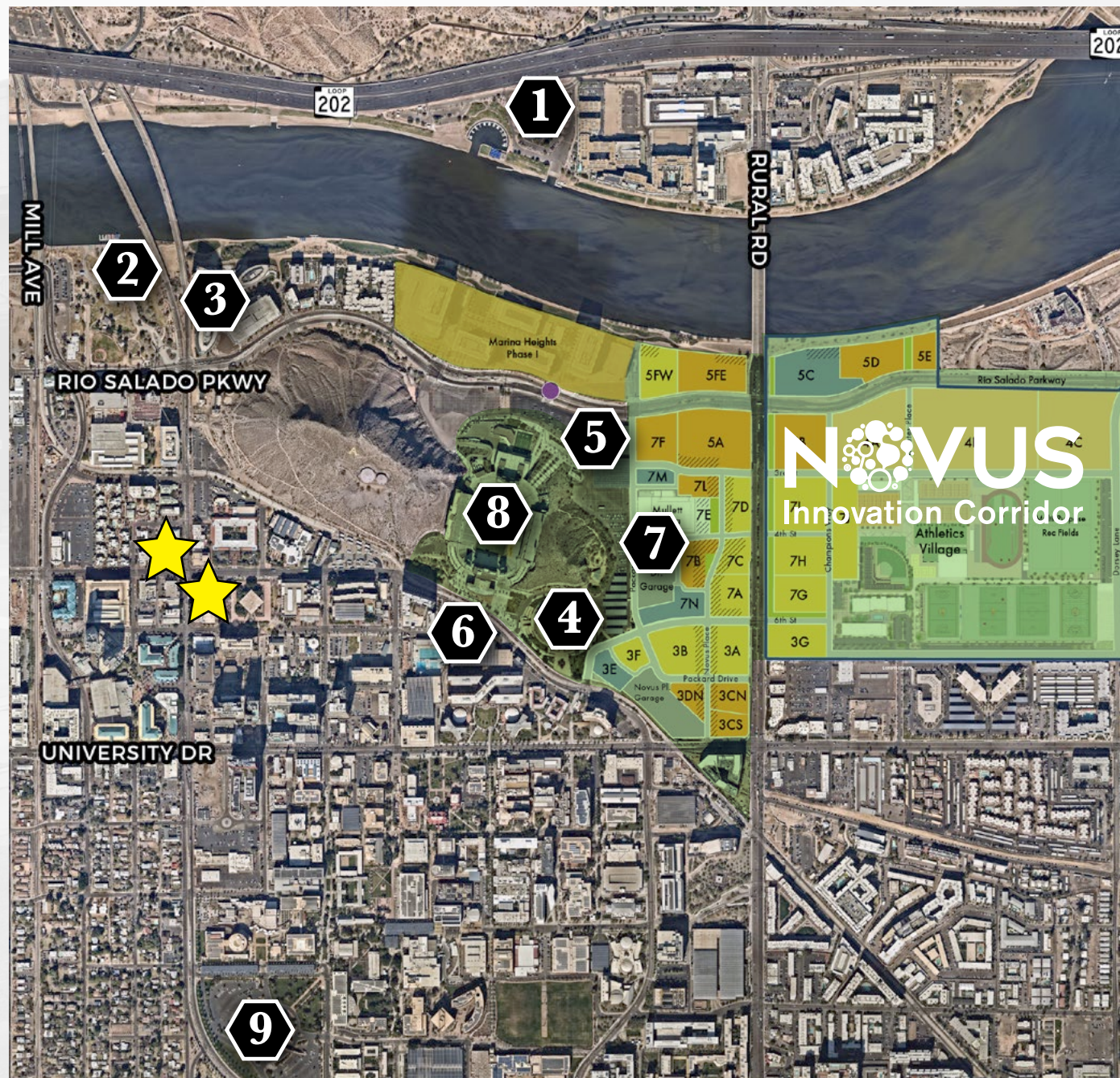
- Home to Sun Devil Hockey, NHL Arizona Coyotes Hockey, ASU Club Hockey, Figure Skating, and live national touring acts such as concerts, comedy shows, family shows, holiday and more.
- Practice arena (open 360 days/year) with an estimated weekly foot traffic of 3,100, which includes youth/adult hockey, high school/club games, practices, parties and figure skating

## 8 SUN DEVIL STADIUM

- Seats for 50,000+ spectators
- Average attendance 49,166
- Annual attendance 344,161

## 9 GAMMAGE THEATRE

- ±60 performances annually
- Estimated 336,000 annual attendance





# AERIAL





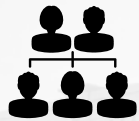


**HAYDEN FLOUR REDEVELOPMENT**  
Creative mixed-use development that will include restaurants, hospitality, office and other retail. Project is in the preliminary stages working with City of Tempe on design. More details will be available in 2024.

# DOWNTOWN TEMPE AERIAL



# DEMOGRAPHICS



## TOTAL POPULATION

	1-Mile	3-Mile	5-Mile
2023	25,517	125,031	337,669
2028	26,286	133,951	350,648



## DAYTIME POPULATION

	1-Mile	3-Mile	5-Mile
2023	73,912	245,826	554,491



## HOUSEHOLDS

	1-Mile	3-Mile	5-Mile
2023	9,105	53,743	145,338
2028	9,656	58,543	152,822



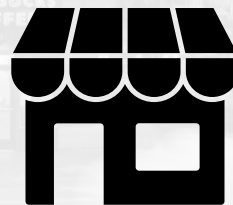
## BUSINESSES

	1-Mile	3-Mile	5-Mile
2023	1,069	6,860	15,616



## OFFICE

**±4.5 MILLION**  
SQUARE FEET



## RETAIL/ RESTAURANTS

**±275,000**  
SQUARE FEET



## MULTIFAMILY

**±4,100**  
PLANNED RESIDENCES



**±55,000 STUDENTS**

More than 55,000 students study at the historic Tempe campus.



**±40 SPECIAL  
EVENTS**

Held annually & state's largest  
4th of July Celebration.

**±2.4 MILLION  
PEOPLE**

Visit Tempe Town Lake each year.



**±8.2 MILLION  
PEOPLE**

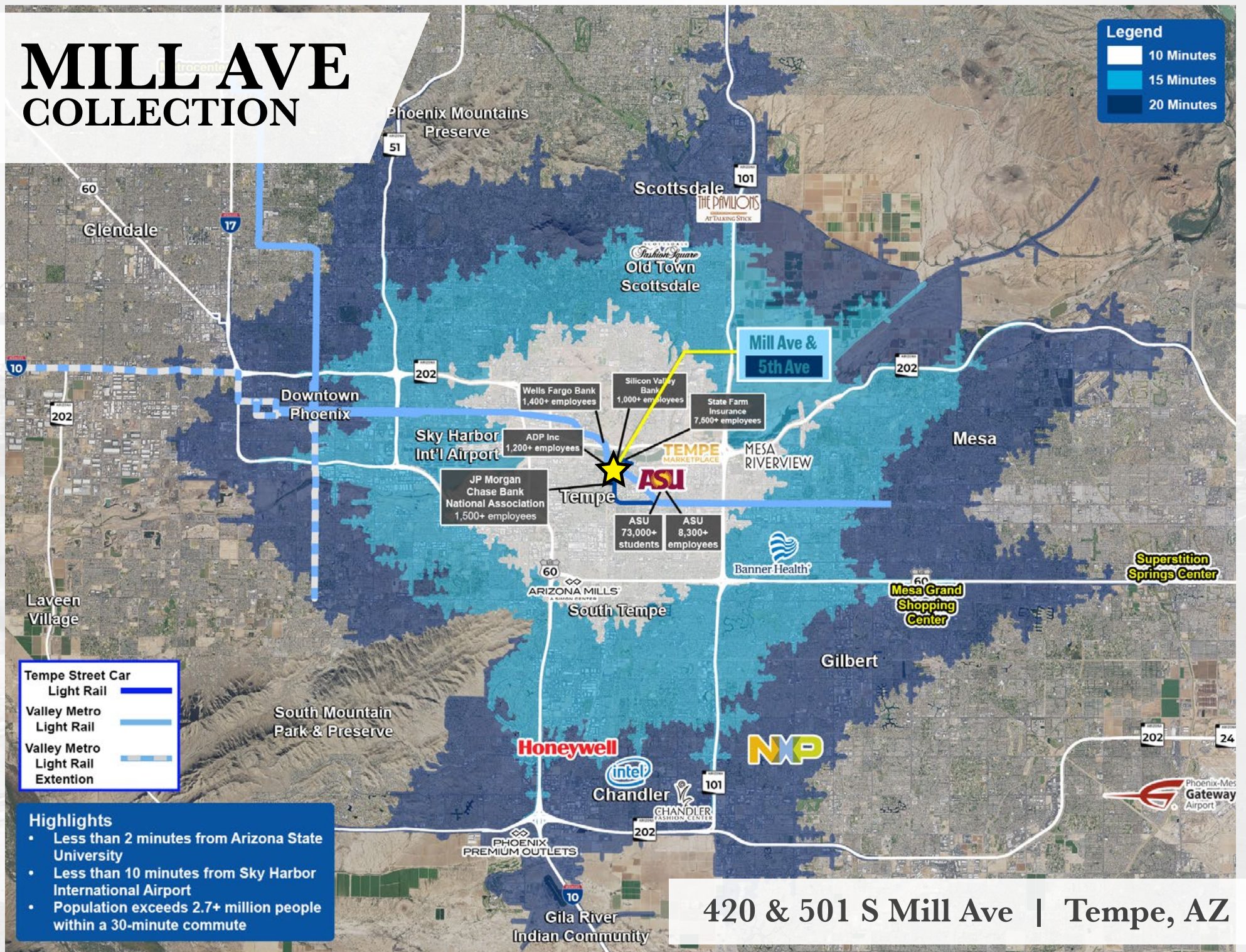
Special annual events exceeding over 8.2 million.  
Impacting local restaurants, shops & hotels.



2023 ESRI ESTIMATES

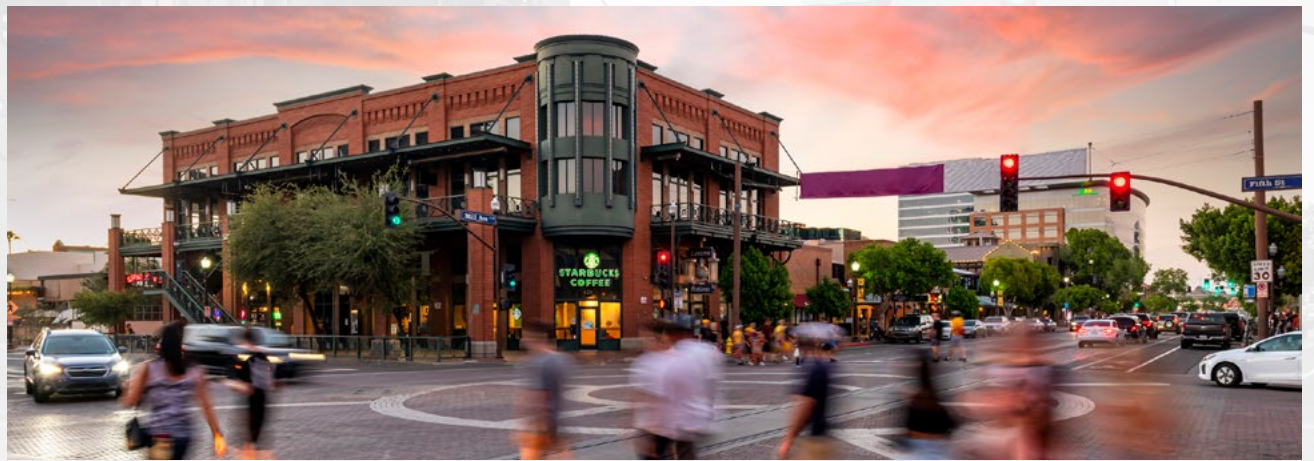


# MILL AVE COLLECTION



420 & 501 S Mill Ave | Tempe, AZ









**Courtney Van Loo**  
Associate Vice President  
(602) 288-3466

**[cauther@pcaemail.com](mailto:cauther@pcaemail.com)**

**Nick DeDona**  
Associate Vice President  
(602) 734-7208

**[ndedona@pcaemail.com](mailto:ndedona@pcaemail.com)**

**Chris Schmitt**  
Associate  
(602) 288-3464

**[cschmitt@pcaemail.com](mailto:cschmitt@pcaemail.com)**

The information contained herein has been obtained from sources believed reliable. While we do not doubt its accuracy, we have not verified it and make no guarantee, warranty or representation about it. It is your responsibility to independently confirm its accuracy and completeness. Any projections, opinions, assumptions or estimates used are for example only, and do not represent the current or future performance of the property. The value of this transaction to you depends on tax and other factors which should be evaluated by your tax, financial and legal advisors. You and your advisors should conduct a careful, independent investigation of the property to determine to your satisfaction the suitability of the property for your needs.

